

***DENVER SOUTH HIGH SCHOOL  
POST-SECONDARY PLANNING GUIDE***



***CREATING POSSIBILITIES FOR TOMORROW***

# ***Denver South High School***

## **Post-Secondary Success Guide**

### **Creating the Possibilities for Tomorrow**

*The Post-Secondary Success Guide* has been prepared for **YOU** by the Denver South Counseling Team and College Advisor to help **YOU** plan for your future. Please read and ask questions!

**To Students:** This is an exciting time in your lives. You are about to embark on an incredible journey and we want to make sure you are successful at whatever path you chose. Whether that is attending a technical/certificate program, two year community college, a four year university or a highly selective private college; we are here to help you achieve and plan ahead. Your Counselors are here to help build a competitive and rigorous academic schedule and to provide emotional and social support as well. Your Counseling Team, including the DSF Advisor, is here to help you research colleges or universities you are thinking about attending. They are also here to help you find ways to pay for that dream school. Ask us all questions when you don't know the answer. We are all here to support you!

**To Parents:** As you can imagine, the college application process has become a bit more complicated and financial aid regulations change every year. We encourage you to read the packet and use it as a place to help you and your child make post-secondary plans. We hope this is something you can work on together and enjoy the process. This is an exciting time for you and your child. The Counseling Team and the Denver Scholarship Foundation are here to support you as well. Please contact us for assistance.

Introduction	3
Senior College Calendar	4-5
Junior and Sophomore Calendar	6-7
Four-Year Curriculum Planning Guide	8-10
Having Trouble Getting Started?	11
Selecting a College or University	12
Colleges According to Academic Selectivity	13-14
Historically Black Colleges and Universities	15-16
Colleges with a Significant Number of Latino Students	17
Significant Number of Native American Students	18
Names and addresses of Colorado colleges and universities	19
Colleges That Require SAT II Subject Test	20
Tips for Visiting a College	21
Visiting with College Representatives	22
The Personal Interview	23
Steps on "How to" Apply to College	24
College Essay Tips & Tricks	25-26
Websites for Post High School Education	27
Financial Aid	28
Test Preparation Programs	29
AP Test Schedule	30
Common Terms Used in Higher Education	31-32
Post High School Options to Consider in Addition to College	33-34
Online Colleges/Distance Learning	35
Job Corps/AmeriCorps	36
CCHE Index scores for admission to in-state public colleges	37-38
NCAA Division I & Division II Eligibility	39-41

## ***Denver South High School Counseling Philosophy Statement:***

The counselors of South High embrace the philosophy that the school counseling program is an essential and integral part of the overall educational process. Our comprehensive program is built on the assumption that certain educational, career, and personal objectives are attainable when school counseling for all students is provided. This implementation acknowledges that school counseling is no longer a service to be offered by one person, but a program coordinated with other educators incorporating a comprehensive curriculum. Growth and learning are developmental; therefore, school counseling services must be developmental and sequential in nature and in structure.

### ***We strive to offer:***

- A school counseling program that reaches the needs of 100% of the student population at South High.
- A programmatic approach to school counseling services and programs.
- Full implementation of the American School Counselor Association (ASCA) National Model.
- Identification and achievement of student competencies and outcomes through the school counseling program.
- Accountability to our students, parents and staff members.

### ***What do South Counselors do?***

Counselors are Professional School Counselors that deliver classroom guidance lessons and work with small groups of students, as well as individual students. Each South counselor is assigned to a specific group of students who they work with closely from 9th grade until graduation. They coordinate school programs to benefit students and refer students and families to community agencies when needed. Professional school counselors work closely with building administrators, psychologists, social workers and staff, in order to promote a systemic approach to student achievement. They are trained experts in academic issues, career and college issues, and personal and social issues, as well as strong advocates for students. Counselors work closely with Future Center staff and college/tech school representatives, providing the best post-secondary options for a successful future.

## ***The Denver Scholarship Foundation at Denver South High School***

The Denver Scholarship Foundation has proudly served the Denver community since its inception in 2006. South High School is home to one of the first Future Centers in the district along with Montbello High School and Abraham Lincoln High School. South also is one of the top three schools that have awarded the DSF Scholarship to its students. *With over \$29 million in outside scholarship money awarded to students since 2012, South consistently works hard to make sure every student has a plan when they graduate.*

### ***The Denver Scholarship Foundation Mission:***

The Denver Scholarship Foundation inspires and empowers Denver Public Schools' students to enroll in and graduate from postsecondary institutions of higher education, by providing the tools, knowledge, and financial resources essential for success.

### ***Future Center Support:***

The Future Center provides students with additional support in planning for life after high school. The Future Center is a place where students can research, locate and apply to colleges as well as scholarships.

# Senior College Checklist

## SEPTEMBER

- ✓ Start College Applications
- ✓ Schedule an appointment with your Counselor and DSF Advisor to submit your applications
- ✓ Letters of Recommendation Request Forms turned into Teachers
- ✓ College Essay is perfected
- ✓ Register for the SAT/ACT test

### SAT Test (\$50) Registration

October	September
November	October
December	November
January	December
March	February
May 6	April 7
June 3	May 9

[www.collegeboard.com](http://www.collegeboard.com)

### ACT Test (\$34) Registration

September	August
October	September
December	November
February	January
April 8	March 3
June 10	May 5

[www.actstudent.org](http://www.actstudent.org)

**Attend the College & Financial Planning Night for Seniors and their Parents in September.**

***All NCAA Bound Student Athletes will also need to attend a meeting in September.***



## OCTOBER: COLLEGE APPLICATION MONTH

- ✓ FAFSA is available October 1<sup>st</sup>!!
- ✓ **Attend FAFSA NIGHT**
- ✓ Continue completing college applications, essays and follow up with teachers about letters of recommendations
- ✓ Register to retake the ACT/SAT if needed
- ✓ Continue Scholarship Search
- ✓ Attend Out-of-State College Fairs and Events (See Below)

### **Out-of-State College Fair**

October TBD at Lakewood High School

### **NACAC National College Fair**

October TBD at the Denver Mart Expo Building

***Over 500 colleges/universities will be in attendance!!***

### **South High School College Fair**

October TBD

## **NOVEMBER**

- ✓ Apply for Scholarships
- ✓ Still time to retake the SAT or ACT—seek out tutors if necessary. See your DSF Advisor.

## **DECEMBER**

- ✓ Make sure ALL applications are submitted before you leave for break!
- ✓ Keep up your attendance

## **JANUARY**

- ✓ Be checking your email for acceptances and financial aid updates.
- ✓ Create your College Student Portal.
- ✓ Check on financial aid verification paperwork.

## **FEBRUARY**

- ✓ Complete your FAFSA if you have not already completed this important step!
- ✓ All MALE U.S. Citizens and Permanent Residents of the state will need to register for the draft/selective service. You must prove draft registration in order to receive financial aid. You may visit [www.sss.gov](http://www.sss.gov) to apply.
- ✓ If you wish to have your mid-year grade reports sent to college, contact your counselor to be sure they have been sent through Naviance.

## **MARCH**

- ✓ FAFSA MUST be submitted by MARCH 1<sup>st</sup>!!!
- ✓ Institutional Scholarships Applications are due on March 1st
- ✓ Complete your DSF Scholarship Application.
- ✓ Begin applying for campus housing.
- ✓ Complete your financial aid file at the college you are planning on attending.

## **APRIL**

- ✓ Denver Scholarship Foundation Scholarship is due APRIL 1<sup>st</sup>!!
- ✓ Sign up online for New Student Orientations at the college you plan on attending
- ✓ If you haven't completed your FAFSA or need to submit verification worksheets, please see Meredith in the Future Center.

## **MAY: CONGRATULATIONS ON GRADUATING!!**

- ✓ In keeping with the Candidates Reply Date Agreement Act, you must notify the colleges by May 1<sup>st</sup> of your decision. Notify the counselor and DSF advisor of your decision.
- ✓ Inform your counselor and DSF advisor of ALL scholarships that have been awarded before senior checkout.
- ✓ Complete your District Exit Survey and Final Transcript Request Form through Naviance BEFORE check out!
- ✓ Are you planning on going away and living on campus? This event is great for you:

## **JUNE/JULY**

- ✓ Complete your Financial Aid Packages at your college before July 15<sup>th</sup>!

# **Junior Checklist**

## **SEPTEMBER**

- ✓ Think about why you want to go to college. Clarify your reasons, write them down, and keep them in mind throughout the year.
- ✓ Identify resources, such as counselors, DSF advisor, college catalogues, the Internet, The College Handbook, and publications in the Future Center.
- ✓ Look at the Visit Schedule for colleges to visit South on your Naviance account. Sign up for the ones you are seriously interested in

## **OCTOBER**

- ✓ Start to develop your interests, educational priorities, special talents and abilities, social and cultural preferences and personal qualities.
- ✓ Prepare of preliminary list of what you think you want to study in college—complete interest surveys on Naviance.
- ✓ Plan to attend Out-of-State College Nights (see the senior checklist for details and dates) and the South College Fair.

## **NOVEMBER**

- ✓ Continue to make a list of colleges and college features that suit your interests on your Naviance accounts.
- ✓ Begin academic prep for the SAT/ACT by utilizing Khan Academy through your College Board account. You can also seek out tutoring options through the Future Center (see your DSF advisor for details)

## **DECEMBER**

- ✓ Focus on your finals and keep your attendance up!

## **JANUARY**

- ✓ Begin to use the counseling office and Future Center, Naviance and find information about colleges you have expressed most interest in. Read the publications very carefully. Talk with your teachers, counselor, DSF advisor, parents and friends about your thoughts and expectations.

## **FEBRUARY**

- ✓ Discuss your plans with your counselor as you prepare your schedule for your senior year.
- ✓ Register for the April SAT test.  
\*\*Note: If you are a NCAA College Bound Student Athlete, you will need to register for the April ACT/SAT not offered at South and also MUST take the SAT at South as well.

## **MARCH**

- ✓ Continue to clarify your goals and interests
- ✓ Participate in activities during school wide testing
- ✓ Most colleges that require SAT II subject tests will require you to take either two or three of them, check with your college for clarification. Each subject test is an hour long and you may take from one to three tests in a sitting.
- ✓ Attend these two events:

### **Junior College Planning Night March TBD**

### **Denver RMACAC College Fair March TBD**

## **APRIL**

- ✓ Prepare college visits over the summer
- ✓ Fill out interest cards for the colleges you are interested in applying to for mailings
- ✓ Review ACT Material
- ✓ Complete the Junior Survey on Naviance
- ✓ Have YOU and your PARENT complete FSA IDs ([www.fsaid.ed.gov](http://www.fsaid.ed.gov))

## **MAY**

- ✓ Identify teachers, counselors or administrators who could write you letters of recommendations. Make sure they can speak to your character and academic performance.

## **JUNE/JULY/AUGUST**

- ✓ Work. Colleges expect you to help defray the expense of your education.
- ✓ You should plan on saving \$200-400 on application fees. The counselors and DSF advisors also have waivers for students who qualify for free/reduced lunch

# Sophomore Checklist

## SEPTEMBER

- Continuing expanding your college list on Naviance and familiarizing yourself with its outstanding capabilities to help plan your future.
- Start the year off strong and focus on your grades and your attendance.
- Join a club, activity or sport. Try something new!

## OCTOBER

- Plan to attend the Out-Of-State College Nights. There will be over 100 colleges in attendance. It will definitely be worth your time to attend and encourage your parents to join you.

## JANUARY

- Begin developing your personal and professional resume.
- Start volunteering.

## MARCH

- Attend the Denver RMACAC College Fair at the University of Denver on March 15.
- Plan college trips during Spring Break and your Summer Vacation.

## APRIL

- Attend the **Sophomore College Planning Night**

**Not sure where to start? Do not worry! Log into your Naviance account through the Denver South homepage ([www.denversouth.org](http://www.denversouth.org)). Under your COLLEGES tab, you will find a SUPERmatch survey and it is SO helpful!**

**Concentrate on your grades this year.**  
**Remember that community service or volunteering not only makes you feel good but will also look good on your resume for college.**

### ***Denver Public Schools Graduation Requirements***

As set by the district

- English 4 years 40 credit hours
- Math 4 years 40 credit hours
- Social Studies 3 years 30 credit hours
- Science 3 years 30 credit hours
- Physical Education 1 year 10 credit hours
- Elective Credits 90 credit hours

Your transcript is your official record for all grades earned in grades 9-12.

- (10 Arts, 30 Academic, 50 Misc.)
- Foreign Language is required for many four year institutions

**TOTAL 240 credit hours**

### **FOUR YEAR CIRRICULUM PLANNING GUIDE**

This has been prepared to assist you and your parents in planning a suitable college preparatory program.

Colleges vary in purpose, nature of curricula, level of difficulty, and selectivity. Therefore, the type of program you follow in high school should be appropriate to the kind of college you seek to enter.

Illustrated same college preparatory programs, which will meet the requirements of the different types of colleges, are included.

- A few representative colleges are named under the heading of each sample program. Other colleges in each category also have the same recommended preparation.
- Eighth grade algebra and foreign language courses may count toward meeting college entrance requirements.
- It is recommended that all students should complete at least one semester of keyboarding.
- If a college requires three years of laboratory science, one year must be physics or chemistry.
- Concurrent Enrollment options are available for qualifying juniors and seniors (see your counselor for more information).

NOTE: Students may take courses in Art, Business, English, Foreign Language, Industrial Technology, Mathematics, Music, ROTC, Science, Social Studies, and Physical Education. All additional academic credits taken beyond the minimums are considered electives in the academic areas and count toward the total of 240 hours. Electives may be taken in core areas as well as in traditional electives. A college-bound student should plan to take a minimum of four academic subjects each semester in grades 9-12.

BASIC COURSE OF STUDIES TO MEET DPS GRADUATION REQUIREMENTS—								
AREAS	Gr 9 Sem 1	Gr 9 Sem 2	Gr 10 Sem 1	Gr 10 Sem 2	Gr 11 Sem 1	Gr 11 Sem 2	Gr 12 Sem 1	Gr 12 Sem 2
English	English 1	English 1	English 2	English 2	English 3	English 3	Upper Level English	Upper Level English
Math	Algebra 1	Algebra 1	Geometry	Geometry	Algebra Adv 2	Algebra Adv 2	Math	Math
Science	Biology	Biology	Chemistry	Chemistry	Physics	Physics	Elective	Elective
Soc Studies	Geography/World His	Geography/World His	US History	US History	Civics	SS Elective	Elective	Elective
Physical Ed	Phys Ed	Phys Ed	Academic Elective	Academic Elective	Elective	Elective	Elective	Elective
Elective	Fine Art / CTE	Fine Art / CTE	Elective	Elective	Elective	Elective	Elective	Elective
World Language	World Language	World Language	Elective	Elective	Elective	Elective	Elective	Elective



COLLEGES WITH MODERATELY SELECTIVE ADMISSIONS								
Adams St. Coll., Ft. Lewis Coll., Mesa St. Coll., Univ. of So. Colo., Western St. Coll., Metro St. Coll. of Denver								
AREAS	Gr 9 Sem 1	Gr 9 Sem 2	Gr 10 Sem 1	Gr 10 Sem 2	Gr 11 Sem 1	Gr 11 Sem 2	Gr 12 Sem 1	Gr 12 Sem 2
English	English 1	English 1	English 2	English 2	English 3	English 3	Upper level English	Upper Level Eng.
Math	Algebra 1	Algebra 1	Geometry	Geometry	Algebra Adv 2	Algebra Adv 2	Math Elective	Math Elective
Science	Biology	Biology	Chemistry	Chemistry	Physics	Physics	Elective	Elective Soc Studies
Social Studies	Geography/ World His	Geography/World His	US History	US History	Civics	SS Elective	Social Studies	Social Studies
Physical Ed	Phys Ed	Phys Ed	Academic Elective	Academic Elective	Elective	Elective	Elective	Elective
Elective	Fine Art / CTE	Fine Art /CTE	Elective	Elective	Elective	Elective	Elective	Elective
World Language	World Language	World Language	World Language	World Language	Elective	Elective	Elective	Elective

STANDARD COLLEGES AND UNIVERSITIES								
Most state colleges and universities.								
AREAS	Gr 9 Sem 1	Gr 9 Sem 2	Gr 10 Sem 1	Gr 10 Sem 2	Gr 11 Sem 1	Gr 11 Sem 2	Gr 12 Sem 1	Gr 12 Sem 2
English	English 1	English 1	English 2	English 2	English 3	English 3	Upper level English	Upper level English
Math	Algebra 1	Algebra 1	Geometry	Geometry	Algebra 2 Adv	Algebra 2 Adv	Elective	Elective Science
Earth Science	Biology	Biology	Chemistry	Chemistry	Physics	Physics	Elective	Elective
Soc Studies	Geography/World His	Geography/World His	US History	US History	Civics	SS Elective	Social Studies	Social Studies
Physical Ed	Phys Ed	Phys Ed	Academic Elective	Academic Elective	Elective	Elective	Elective	Elective
Fine Art	Fine Art /CTE	Fine Art/ CTE	Elective	Elective	Elective	Elective	Elective	
Elective	World Language	World Language	World Language	World Language	World Language	World Language	Elective	Elective Elective

SELECTIVE COLLEGES AND UNIVERSITIES								
Puget Sound (WA), Howard (DC), Creighton (NB), Coe (IA), Baylor (TX), Michigan State (MI)								
AREAS	Gr 9 Sem 1	Gr 9 Sem 2	Gr 10 Sem 1	Gr 10 Sem 2	Gr 11 Sem 1	Gr 11 Sem 2	Gr 12 Sem 1	Gr 12 Sem 2
English	English 1 Honors	English 1 Honors	English 2 Honors	English 2 Honors	English 3 Honors or AP Lang/Other Eng. Honors	English 3 Honors or AP Lang/ Other English Honors	AP Lit/Honors Thesis (121)/ CU Succeeds	AP Lit/Honors Thesis (121)/ CU Succeeds
Math	Algebra 1	Algebra 1	Geometry	Geometry	Algebra 2 Adv	Algebra 2 Adv	Pre- Calculus	Pre-Calculus
Science	Earth Science Honors Earth Science Honors Biology Honors	Biology Honors	Chem or Physics	Chem or Physics	Science Elective Science Elective			
Soc Studies	Geography Honors	Geography Honors	Honors Social Studies	Honors Social Studies	Civics Honors	SS Elective	AP US History	AP US History
Physical Ed	Phsy Ed	Phys Ed	Academic Elective	Academic Elective	Elective	Elective	Elective	Elective
Elective	Fine Art	Fine Art	Elective	Elective	Elective	Elective	Elective	Elective
Elective	World Language	World Language	World Language	World Language	World Language	World Language	Elective	Elective

UNIVERSITY OF COLORADO								
AREAS	Gr 9 Sem 1	Gr 9 Sem 2	Gr 10 Sem 1	Gr 10 Sem 2	Gr 11 Sem 1	Gr 11 Sem 2	Gr 12 Sem 1	Gr 12 Sem 2
English	Int Lit /Comp Honors Int Lit/Comp Honors Am Lit/Comp Honors	Am Lit/Comp Honors	Brit Lit/Comp Honors Brit Lit/Comp Honors Honors Thesis	Honors Thesis				
Math	Algebra 1	Algebra 1	Geometry	Geometry	Algebra 2 Adv	Algebra 2 Adv	Pre-Calculus	Pre-Calculus
Science	Earth Science Honors Earth Science Honors Biology Honors	Biology Honors	Chem or Physics	Chem or Physics	Science Elective Science Elective			
Soc Studies	Geography Honors	Geography Honors	Honors Social Studies	Honors Social Studies	Civics Honors	SS Elective	AP US History	AP US History
Physical Ed	Phsy Ed	Phys Ed	Academic Elective	Academic Elective	Elective	Elective	Elective	Elective
Elective	World Language	World Language	World Language	World Language	World Language	World Language	Elective	Elective
Elective	Fine Art	Fine Art	Elective	Elective	Elective	Elective	Elective	Elective
* BUSINESS	4 yrs math							
* ENGINEERING	4 yrs Math (including Pre-Calculus, Calculus AB)							

TOP SCIENCE AND ENGINEERING SCHOOLS								
Colo School of Mines, Cal. Tech., MIT, Rennseler (NY), Harvey-Mudd (CA), Rice (TX)								
AREAS	Gr 9 Sem 1	Gr 9 Sem 2	Gr 10 Sem 1	Gr 10 Sem 2	Gr 11 Sem 1	Gr 11 Sem 2	Gr 12 Sem 1	Gr 12 Sem 2
English	Int Lit/Comp Honors Int Lit/Comp Honors Am Lit/Comp Honors	Am Lit/Comp Honors	Brit Lit/Comp Honors Brit Lit/Comp Honors AP Literature	AP Literature				
Math	Geometry Honors	Geometry Honors	Algebra 2 Honors	Algebra 2 Honors	Pre- Calc Honors	Pre-Calc Honors	AP Calculus B	AP Calculus C
AP Chem or								
Science	Biology Honors	Biology Honors	Chemistry Honors	Chemistry Honors	Physics Honors	Physics Honors	Ph y s	AP Chem or Phys
Soc Studies	Geography Honors	Geography Honors	Honors Social Studies	Honors Social Studies	Civics Honors	SS Elective	AP US History	AP US History
Physical Ed	Phsy Ed	Phys Ed	Academic Elective	Academic Elective	Elective	Elective	Elective	Elective
Elective	World Language	World Language	World Language	World Language	World Language	World Language	(World Lang)	(World Lang)
Elective	Fine Art	Fine ART	Elective	Elective	Elective	Elective	Elective	Elective

HIGHLY SELECTIVE COLLEGES AND UNIVERSITIES								
Bowdoin (ME), Carnegie Mellon (PA), Duke (NC), New York University (NY), Northwestern (IL), Univ. of Penn.								
AREAS	Gr 9 Sem 1	Gr 9 Sem 2	Gr 10 Sem 1	Gr 10 Sem 2	Gr 11 Sem 1	Gr 11 Sem 2	Gr 12 Sem 1	Gr 12 Sem 2
English	Int Lit/Comp Honors Int Lit/Comp Honors Am Lit/Comp Honors	Am Lit/Comp Honors	AP Lang and Comp	AP Lang and Comp	AP Literature	AP Literature		
Math	Geometry Honors	Geometry Honors	Algebra 2 Honors	Algebra 2 Honors	Pre-Calc Honors	Pre-Calc Honors	AP Calculus A	AP Calculus B
Science	Biology Honors	Biology Honors	Chemistry Honors	Chemistry Honors	Physics Honors	Physics Honors	AP Science	AP Science Soc Studies
Geography Honors	Geography Honors	Honors Social Studies	Honors Social Studies	AP Social Studies	AP Social Studies	AP US History	AP US History	
Physical Ed	Phys Ed	Phys Ed	Academic Elective	Academic Elective	Civics Honors	Elective	Elective	Elective
Elective	World Language	World Language	World Language	World Language	World Language	World Language	(World Lang)	(World Lang)
Elective	Fine Art	Fine Art	Elective	Elective	Elective	Elective	Elective	Elective

MOST SELECTIVE COLLEGES/UNIVERSITIES AND IVY LEAGUE SCHOOLS								
Amherst (MA), Brown (RI), Harvard (MA), Swarthmore (PA), Stanford (CA), Pomona (CA)								
AREAS	Gr 9 Sem 1	Gr 9 Sem 2	Gr 10 Sem 1	Gr 10 Sem 2	Gr 11 Sem 1	Gr 11 Sem 2	Gr 12 Sem 1	Gr 12 Sem 2
English	Int Lit/Comp Honors Int Lit/Comp Honors Am Lit/Comp Honors	Am Lit/Comp Honors	AP Lang and Comp	AP Lang and Comp	AP Literature	AP Literature		
Math	Geometry Honors	Geometry Honors	Algebra 2 Honors	Algebra 2 Honors	Pre- Calc Honors	Pre-Calc Honors	AP Calculus A	AP Calculus B
Science	Biology Honors	Biology Honors	Chemistry Honors	Chemistry Honors	Physics Honors	Physics Honors	AP Science	AP Science
Soc Studies	Geography Honors	Geography Honors	AP Human Geog	AP Human Geog	AP Social Studies	AP Social Studies	AP US History	AP US History
Elective	World Language	World Language	World Language	World Language	World Language	World Language	(World Lang)	(World Lang)
Physical Ed	Phys Ed	Phys Ed	Academic Elective	Academic Elective	Civics Honors	Elective	Elective	Elective Elective

## **MORE SCHOOL AFTER HIGH SCHOOL!!!**

*Having TROUBLE getting started?*

*Why go to college?*

*My GPA is too low!  
I messed up my first two years of high school!  
I can't afford it!  
Only "brains" go to college!  
Nobody else in my family went to college!  
I just want to get a job!  
I want to get out on my own!*

*Should I go right to work?  
Should I wait a year to continue my education?  
Should I attend vocational school?  
Should I choose a small college or a big university?  
Should I choose a technical or a liberal arts major?  
Should I join the military?*

*How many times have you said anyone of these things to yourself?*

***Do you want any of the following in your life?***

*A high paying job...A profession...Be on your own and afford it...*

*Independence...Experience...Personal fulfillment...*

*Development your talents and interests...Live the "good life"...Security and benefits...*

Education is the key to many, if not all of the above. Education means many things to different people. Rest assured that there is a place to further your education; college is only one of the choices. A low grade point average does not keep you out of college; it limits the number of schools from which you can choose.

The Counseling Center and the Future Center have many resources to help you find the right path to Post High School Education.

### **Naviance**

Naviance Planning for College program. Go to [denversouth.org](http://denversouth.org)

### **Internet**

Search for the right college.  
Over 3,000 two or four-year schools at your fingertips

### **College Representatives**

Visit with any of the representatives who visit South each year. Sign up on Naviance through college visits and print your pass.

### **Catalogs/Bulletins**

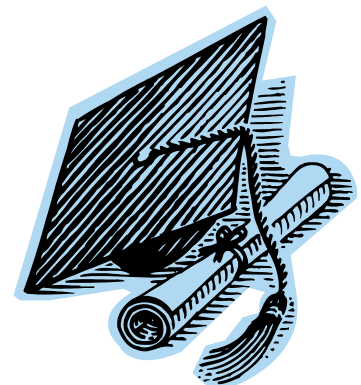
Read about colleges using the catalogues and bulletins available in 114.

### **Fairs/Workshops**

Attend the college fairs and workshops in the metro area. Information is in the Counseling Center and Future Center.

### **Other Info**

Community College Technical Programs  
Community College Degree Programs  
Information on Technical Schools  
Emily Griffith Opportunity School  
Apprentice Programs  
Armed Forces  
G.E.D  
Job Corps



## Selecting a College or University

1. Subject area of interest. Does the college offer a course of study in the subject that interests you?
2. Excellence of subject area of interest. Check the reputation of the school. Counselors may offer information or check books published on the subject area available at libraries or bookstores.
3. Location. Think about what kind of geographic area might best suit you. For example, why consider a place with lots of snow if you dislike the winter?
4. Size. Some people do better at a smaller college than at a large college or university. Knowledge of yourself as a person will help you make a decision on this subject.
5. College Campus. Anyone planning to spend four years at a college should visit the campus. Most colleges encourage such a visit, as well as, a meeting with the admission's counselor and a guided tour of campus.
6. Cost. In-state colleges and universities generally cost less; however, do not assume that a school not in Colorado is out of the question!
7. Financial Aid. Which colleges offer the best financial aid package? A financial aid package can include a scholarship, grant, loan, part-time employment, and a work study program. A student may apply to several colleges and make a decision on where to attend based on which school offers the most financial aid. Such a decision is especially appropriate for private colleges.
8. Admissions Criteria. Can you get in? Do you have the correct high school course work? Is your class rank and ACT/SAT scores adequate? At some colleges, competition is high and space is limited, but many colleges have more relaxed admission policies.
9. Foreign Language. Some colleges and universities require foreign language for admittance. Check the catalog for the school's requirements.
10. Activities Other Than Academic. Does the school offer foreign exchange programs (study abroad), a language house on campus, drama, orchestra, athletics or other programs that interest you?
11. ROTC. Reserve Officer Training Programs can provide considerable financial aid. There is, however, military commitment following graduation.
12. Talk! Talk! Talk! Talk with college representatives who visit our school. Talk with friends, neighbors, relatives that may be familiar with a college that you are considering.

**Most students find it valuable to apply to 3 to 5 colleges using the following guidelines:**

- Apply to your "dream" college or university
- Apply to a school where you have a 50-50 chance of acceptance
  - Apply to a school where you are fairly sure of acceptance
  - Apply to a school that is a sure bet, if that is possible!

# COLLEGES AND UNIVERSITIES ACCORDING TO SELECTIVITY

## **MOST SELECTIVE (COMPETITIVE)**

- ☐ top 10% of class
- ☐ SAT I and SAT II scores in 650 range and up, ACT – 29 and up
- ☐ demonstrate leadership ability and/or special talents in athletics', music, etc.
- ☐ exceptionally strong teacher and counselor recommendations
- ☐ accept 1/3 or less of applicants

Amherst College – Massachusetts  
 Barnard College – New York (W)  
 Bates College – Maine  
 Boston College – Massachusetts  
 Bowdoin College – Maine  
 Brandeis University – Massachusetts  
 Brown University – Rhode Island  
 California Institute of Technology  
 Colby College – Maine  
 Chicago, University of – Illinois  
 Columbia College – New York  
 Cornell University – New York  
 Dartmouth College – New Hampshire  
 Duke University – North Carolina  
 Emory College – Georgia  
 Georgetown University, D.C.  
 Harvard College – Massachusetts  
 Harvey Mudd College – California  
 Haverford College – Pennsylvania  
 Johns Hopkins University – Maryland  
 Massachusetts Institute of Technology  
 Northwestern University – Illinois  
 Pennsylvania, University of  
 Pomona College – California  
 Princeton University – New Jersey  
 Rice University – Texas  
 Stanford University – California  
 Swarthmore College – Pennsylvania  
 Tufts University – Massachusetts  
 Wellesley College – Massachusetts (W)  
 Williams College – Massachusetts  
 Yale University – Connecticut

## **HIGHLY SELECTIVE COLLEGES AND UNIVERSITIES**

- ☐ rank top 15% of class
- ☐ SAT I and SAT II scores in 600 and up range ACT 26-28 or better
- ☐ demonstrates leadership ability
- ☐ and/or special talents in athletics, music, etc.

- ☐ exceptionally strong teacher and

- ☐ counselor recommendations

Allegheny College – Pennsylvania  
 Bennington College – Vermont  
 Boston University – Massachusetts  
 Bryn Mawr College – Penn. (W)  
 Bucknell University – Pennsylvania  
 California, University (Berkeley)  
 Carnegie Mellon University – Penn.  
 Case Western Reserve Univ – Ohio  
 Claremont Mc Kenna – California  
 Colgate University – New York  
 Colorado College – Colorado  
 Colorado School of Mines- Colorado  
 Cooper Union – New York  
 Davidson College – North Carolina  
 Denison University – Ohio  
 Dickinson College – Pennsylvania  
 Franklin & Marshall – Pennsylvania  
 Goucher College – Maryland (W)  
 Grinnell College – Iowa  
 Hamilton College – New York  
 Holy Cross College – Massachusetts  
 Illinois Institute of Technology  
 Kenyon College – Ohio  
 Knox College – Illinois  
 Lafayette College – Pennsylvania  
 Lawrence University – Wisconsin  
 Lehigh University – Pennsylvania  
 Macalester College – Minnesota  
 Massachusetts, University of  
 McGill University – Canada  
 Middlebury College – Vermont  
 Michigan, University of  
 Mount Holyoke – (W) Massachusetts  
 New York University  
 North Carolina – University of  
 Notre Dame, University of – Indiana  
 Occidental College – California  
 Pitzer – California  
 Reed College – Oregon  
 Rensselaer Polytechnic Insitute – NY  
 Rochester, University of – New York  
 St. John's College – Maryland  
 Sarah Lawrence College – New York  
 Scripps College (W) – California  
 Skidmore – New York  
 Smith College – Massachusetts (W)  
 Spelman College – Georgia  
 Trinity College – Connecticut  
 Union College – New York  
 Vanderbilt University – Tennessee  
 Vassar College – New York  
 Virginia, University of  
 Washington University – Missouri  
 Washington and Lee – Virginia

Wells College – New York  
 Wheaton College – Massachusetts  
 Whitmann College – Washington  
 William and Mary, College of – Virginia

## **SELECTIVE COLLEGES AND UNIVERSITIES**

- rank in top 25%
  - SAT I scores in 500 and up range ACT – 23-25 or higher
  - good teacher and counselor recommendations
  - admission to co-ed colleges is nearly always more competitive for women than for men
- Adelphi University – New York  
 American University – D.C.  
 Antioch College – Ohio  
 Arizona, University of – Arizona  
 Auburn University – Alabama  
 Augsburg College – Minnesota  
 Baylor University – Texas  
 Blackburn College – Illinois  
 Bradley University  
 Brigham Young University  
 California State Colleges  
 (all 18 branches)  
 Chapman College  
 University of Cincinnati  
 Coe College – Iowa  
 Colorado State University  
 University of Colorado  
 Creighton University – Nebraska  
 University of Denver – Colorado  
 Drake University – Iowa  
 Drexel University – Penn.  
 Elmhurst College – Illinois  
 Emerson College – Mass.  
 Augustana College – S. Dak.  
 Fordham University (M) N.Y.  
 Gustavus Adolphus College Minn.  
 Hamline University – Minn.  
 University of Hartford  
 Hillsdale College – Michigan  
 Hope College – Michigan  
 Hofstra – New York  
 Houston, University of – Texas  
 Howard University – D.C.  
 Idaho, College of – Idaho  
 Illinois Wesleyan  
 Indiana Institute of Tech  
 Iowa Wesleyan  
 Ithaca College – New York  
 Jamestown College – North Dakota

Kansas Wesleyan Univ.  
 Lewis & Clark – Oregon  
 Lindenwood College (W) – Missouri  
 Linfield College – Oregon  
 Long Island University – New York  
 Loyola University – Louisiana  
 Marymount Kansas – (W)  
 Menlo College (M) – Calif.  
 University of Miami (Florida)  
 Michigan State University  
 Milliken University – Illinois  
 Mills College (W) – California  
 Monmouth College (Illinois)  
 Missouri, University of – Missouri  
 Montana, University of – Montana  
 Nebraska Wesleyan  
 Oregon State University  
 Oregon, University of – Oregon  
 Ottawa University – Kansas  
 Pacific Lutheran University – Wash.  
 Pacific, University of – California  
 Park College – Missouri  
 Pepperdine University – Calif.  
 Phillips University – Oklahoma  
 University of Portland  
 University of Puget Sound – OR.  
 Queens College – North Carolina  
 Seattle Pacific College  
 Simpson College – Iowa  
 Spelman College – Georgia  
 Springfield College – (Massachusetts)  
 Stephens College (W) – Missouri  
 Temple University – Penn. Texas  
 Christian University Trinity  
 University – Texas  
 University of Toledo  
 University of Tulsa  
 Virginia Polytechnic Institute  
 Wartburg College – Iowa  
 Wayland Baptist University – Texas  
 Whittier College – California  
 Whitworth College – Wash.  
 Willamette University – Oregon  
 William Jewell College – Missouri

### **COLLEGES OR UNIVERSITIES WITH EASY ADMISSION POLICIES**

- ☐ “C” average
  - ☐ rank in upper 2/3 of class
  - ☐ may admit graduates with below “C”
  - ☐ average with a strong preparatory program or relatively high
  - ☐ SAT I 350- 375 range ACT scores 18-22
- Adams State College – Colorado

Alaska, University of  
 Arizona State College  
 Baker University – Kansas  
 Ball State University – Indiana  
 Bethany College – W. Virginia  
 Black Hills State College  
 Buena Vista College – Iowa  
 California Community Colleges  
 California Lutheran – California  
 Calvin College – Michigan  
 Dakota Wesleyan University  
 Doane College – Nebraska  
 Eastern New Mexico University  
 Eastern Oregon College  
 Fisk University – Tennessee  
 Florida A & M  
 Fort Hays State – Kansas  
 Fort Lewis College – Colorado  
 Friends University – Kansas  
 George Fox College – Oregon  
 Hardin-Simmons University – Texas  
 Huron College – South Dakota  
 Idaho State University  
 Kansas State College  
 Kent State University – Ohio  
 McPherson College – Kansas  
 Midland Lutheran College – Nebraska  
 Montana State University – Montana  
 New Mexico Highlands University  
 New Mexico State University  
 Northern Montana College  
 Oklahoma Baptist University  
 Oklahoma City University  
 Oklahoma State University  
 Prairie View A & M, Texas  
 Seattle University  
 South Dakota State University  
 South Dakota, University of  
 Southern Colorado State College  
 Southern State College- S. Dakota  
 Southwestern College – Kansas  
 Sterling College – Kansas  
 Texas Lutheran College  
 Utah State University  
 Western New Mexico University  
 Western State College  
 Westminster College – Utah  
 Wichita State University  
 Wyoming, University of

### **SOME OUT-OF-STATE COLLEGES WHICH ENCOURAGE COLORADO APPLICANTS**

Antioch College – Ohio  
 Arizona, University of – Arizona  
 Central Washington State College  
 Chadron State College – Nebraska

Clemson University – S. Carolina  
 Creighton University – Nebraska  
 Eastern Michigan University  
 Florida State University  
 Hastings College – Nebraska  
 Hawaii, University of – Hawaii  
 Idaho, University of – Idaho  
 Kansas State University  
 University of Kansas  
 Kent State University – Ohio  
 University of Kentucky  
 Louisiana State University  
 University of Louisville  
 University of Missouri  
 University of Missouri at Kansas City  
 University of Montana  
 University of Nebraska  
 University of Nevada  
 University of New Mexico  
 North Dakota State University  
 Northwest Missouri State Univ.  
 University of North Dakota  
 Norfolk State University – Virginia  
 Northeastern University – Mass.  
 Northern Michigan University  
 University of Oklahoma  
 Portland State College  
 Southern Illinois University  
 Southern Oregon College  
 University of Utah  
 Washington State University  
 Western Illinois University  
 Western Michigan University  
 Willamette University – Oregon  
 Wisconsin State Universities  
 Wyoming, University of – Wyoming

### **Western Undergraduate Exchange WICHE**

There are thirteen western states that encourage students from other states to enroll at reduced tuition in certain university programs.

Alaska	Nevada
Arizona	New Mexico
California	North Dakota
Colorado	Oregon
Hawaii	South Dakota
Idaho	Utah
Montana	Washington
	Wyoming

[www.wiche.edu](http://www.wiche.edu)

# PREDOMINATELY BLACK COLLEGES AND UNIVERSITIES

COLLEGE NAME	CITY, STATE ZIP	STATE
Alabama A & M University	Normal, AL 35762	AL
Alabama State University	Montgomery, AL 36195	AL
Albany State College	Albany, GA 31705	GA
Alcorn State University	Lorman, MS 39095	MS
Allen University	Columbia, SC 29204	SC
Arkansas Baptist College	Little Rock, AR 72202	AR
Atlanta Metropolitan College	Atlanta, GA 30310	GA
Barber-Scotia College	Concord, NC 28025	NC
Benedict College	Columbia, SC 29204	SC
Bennett College	Greensboro, NC 2740	NC
Bethune-Cookman College	Daytona Beach, FL 32015	FL
Bluefield State College	Bluefield, WV 24701	WV
Bowie State University	Bowie, MD 20715	MD
Central State University	Wilberforce, OH 45384	OH
Charles R. Drew University	Los Angeles, CA 90059	CA
Cheyney University	Cheyney, PA 19319	PA
Chicago State University	Chicago, IL 60628	IL
Claflin College	Orangeburg, SC 29115	SC
Clark-Atlanta University	Atlanta, GA 30314	GA
Concordia College	Selma, AL 36701	AL
Coppin State College	Baltimore, MD 21216	MD
D.C., University of the	Washington, DC 20008	DC
Delaware State College	Dover, DE 19901	DE
Dillard University	New Orleans, LA 70122	LA
Edward Waters College	Jacksonville, FL 32209	FL
Elizabeth City State University	Elizabeth City, NC 27090	NC
Fayetteville State University	Fayetteville, NC 28301	NC
Fisk University	Nashville, TN 37203	TN
Florida A & M University	Tallahassee, FL 32307	FL
Florida Memorial College	Miami, FL 33054	FL
Ft. Valley State College	Fort Valley, GA 31030	GA
Grambling State University	Grambling, LA 71245	LA
Hampton University	Hampton, VA 23668 St.	VA
Harris-Stowe State College	Louis, MO 64130	MO
Howard University	Washington, DC 20059	DC
Huston-Tillotson College	Austin, TX 78702	TX
Jackson State University	Jackson, MS 39217	MS
Jarvis Christian College	Hawkins, TX 75765	TX
Johnson C. Smith University	Charlotte, NC 28216	NC
Kentucky State University	Frankfort, KY 40601	KY
Knoxville College	Knoxville, TN 37921	TN
Lane College	Jackson, TN 38301	TN
Langston University	Langston, OK 73050	OK
Lemoyne-Owen College	Memphis, TN 38126	TN
Lewis College of Business	Detroit, MI 48235	MI
Lincoln University	Jefferson City, MO 65102	MO
Lincoln University	Lincoln University, PA 19352	PA
Livingstone College	Salisbury, NC 28144	NC
Martin University	Indianapolis, IN 46218	IN
Mary Holmes College	West Point, MS 39773	MS
Maryland, University of	Princess Anne, MD 21853	MD
Miles College	Birmingham, AL 35208	AL

Mississippi Valley State University	Univ Itta Bena, MS 38941	MS
Morehouse College	Atlanta, GA 30314	GA
Morgan State University	Baltimore, MD 21239	MD
Morris Brown College	Atlanta, GA 30314	GA
Morris College	Sumter, SC 29150	SC
New York, City University of, Medgar Evers College	Brooklyn, NY 11225	NY
Norfolk State University	Norfolk, VA 23504	VA
North Carolina A & T State University	Greensboro, NC 27411	NC
North Carolina Central University	Durham, NC 27707	NC
Oakwood College	Huntsville, AL	AL
Paine College	Augusta, GA 30910	GA
Paul Quinn College	Waco, TX 76704	TX
Philander Smith College	Little Rock, AR 72203	AR
Prairie View A & M	Prairie View, TX 77446	TX
Rust College	Holly Springs, MS 38635	MS
Savannah State College	Savannah, GA 31404	GA
Selma University	Selma, AL 36701	AL
Shaw University	Raleigh, NC 27611	NC
Shorter College	Rome, GA 30165	GA
Sojourner-Douglas College	Baltimore, MD 21205	MD
South Carolina State University	Orangeburg, SC 29117	SC
Southern Univ. A & M College	Baton Rouge, LA 70813	LA
Southern University	New Orleans, LA 70126	LA
Southern University	Shreveport, LA 71115	LA
Southwestern Christian College	Terrell, TX 75160	TX
Spellman College	Atlanta, GA 30314	GA
St. Augustine College	Raleigh, NC 27611	NC
St. Paul's College	Lawrenceville, VA 23868	VA
Stillman College	Tuscaloosa, AL 35403	AL
Talladega College	Talladega, AL 35160	AL
Tennessee State University	Nashville, TN 37203	TN
Texas College	Tyler, TX 75702	TX
Texas Southern University	Houston, TX 77004	TX
Tougaloo College	Tougaloo, MS 39174	MS
Tuskagee University	Tuskagee, AL 36088	AL
Virginia State University	Petersburg, VA 23803	VA
Virginia Union University	Richmond, VA 23220	VA
Voorhees College	Denmark, SC 29042	SC
West Virginia State College	Institute, WV 25112	WV
Wilberforce University	Wilberforce, OH 45384	OH
Wiley College	Marshall, TX 75670	TX
Winston-Salem State University	Winston-Salem, NC 27110	NC
Xavier University	New Orleans, LA 70125	LA



## **COLLEGES WITH A SIGNIFICANT NUMBER OF LATINO STUDENTS**

Adams State College (CO)	Miami University (OH)
Arizona, University of	Miami-Dade Community College (FL)
Barry University (FL)	New Jersey Institute of Technology
California State University	New Mexico—Highlands University
Bakersfield, Dominguez Hills,	Institute of Mining and Technology,
Fresno, Fullerton, Los Angeles,	Military Institute, State University,
Northridge, San Bernadino,	at Albuquerque
Stanislaus, Berkeley, Los Angeles,	New York City University of
Riverside, San Diego, Santa Barbara,	New York School of Interior Design
Santa Cruz	New York, State University of,
Columbia University (NY)	College at Old Westbury
Cornell University (NY)	Newbury College (MA)
Dallas, University of (TX)	Otis/Parsons School of Art and Design(CA)
Desert, College of the (CA)	Our Lady of the Lake University (TX)
DeVry Institute of Technology (IL)	Pomona College (CA)
Eastern New Mexico University	Pitzer College (CA)
El Camino College (CA)	St. Louis University (MO)
Fashion Institute of Technology (NY)	St. Mary's University (TX)
Florida International University	St. Peter's College (NJ)
Fordham University (NY)	Santa Barbara Community College (CA)
Heritage College (WA)	Santa Fe, College of (NM)
Houston, University of (TX)	Southern California, University of
(downtown campus)	Southern Colorado, University of
Kean College (NJ)	Stanford University (CA)
La Verne, University of (CA)	Stevens Institute of Technology (NJ)
Loma Linda University (CA)	Syracuse University (NY)
Loyola Marymount University (CA)	Texas A&I University
Mt. St. Mary's College (CA)	Texas Lutheran College
Mt. St. Vincent, College of (NY)	Texas, University of
Marymount College (NY)	Austin, El Paso
Marymount Manhattan College (NY)	Trinity University (TX)
Massachusetts Institute of Technology	Western New Mexico University
Metropolitan State College (Denver)	Whittier College (CA)
Miami of (FL)	Woodbury University (CA)

## **COLLEGES WITH A SIGNIFICANT NUMBER OF NATIVE AMERICAN STUDENTS**

Alaska, University of, Fairbanks  
Bacone College (OK)  
Bemidji State University (MN)  
Carl Albert State College (OK)  
Central Wyoming College  
Eastern Utah, College of  
Flaming Rainbow University (OK)  
Ft. Lewis College (CO)  
Haskell Indian Nations University (KS)  
Heritage College (WA)  
Huron University (SD)  
Mt. Senario College (WI)  
New Mexico State University, Grants  
New Mexico University of, Gallup  
Northeastern State University (OK)  
Northern Arizona University  
Northland Pioneer College (AZ)  
Pembroke State University (NC)  
San Juan College (NM)  
Santa Fe, College of (NM)  
Southeastern Oklahoma State University

**COLORADO COLLEGES, UNIVERSITIES AND JUNIOR COLLEGES**  
Addresses, Phone Numbers, Admissions, Websites

**Adams State College - Division II**

Stadium Drive  
Alamosa, CO 81102  
Admissions 1-800-824-6494  
www.adams.edu

**Colorado Christian University - Division II**

180 South Garrison Street  
Lakewood, CO 80226  
Admissions (303) 963-3200  
www.ccu.edu

**Colorado College - Division III**

14 East Cache La Poudre Street  
Colorado Springs, CO 80903  
Admission 1-800-260-6458  
www.coloradocollege.edu/admissions

**Colorado School of Mines - Division II**

CSM Student Center 1600 Maple Street  
Golden, CO 80401-1842  
Admissions (303) 273-3220  
www.mines.edu

**Colorado State University at Fort Collins - Division I**

Spruce Hall - 1020 Campus Delivery  
Fort Collins, CO 80523-1020  
Admission (303) 446-2214  
www.colostate.edu (970) 491-6909

**Colorado State University at Pueblo - Division II**

2200 North Bonforte Boulevard  
Pueblo, CO 81001-4901  
Admissions (719) 549-2461  
www.colostate-pueblo.edu

**Fort Lewis College - Division II**

1000 Rim Drive  
Durango, CO 81301-3999  
Admission (970) 247-7184  
www.fortlewis.edu

**Colorado Mesa University - Division II**

1100 North Avenue  
Grand Junction, CO 81501-3122  
Admissions 1-800-982-6372 ext. 1875  
www.mesastate.edu (303) 503-9978

**MSU Denver - Division II**

Campus Box 16  
P. O. Box 173362  
Denver, CO 80217-3362  
Admissions (303) 556-3058  
www.mscd.edu

**Regis University - Division II**

3333 Regis Boulevard, A-12  
Denver, CO 80221-1099  
Admissions (303) 458-4900  
www.regis.edu

**U.S. Air Force Academy - Division I**

U.S. Air Force Academy, CO 80840-5025  
Admissions (719) 333-2520  
www.academyadmissions.com 1-800-443-9266

**University of Colorado at Boulder - Division I**

Regent Adm. Center 125, 552 UCB  
Boulder, CO 80309-0552  
Admissions (303) 492-6301  
www.colorado.edu

**University of Colorado at Colo. Spgs. - Division II**

1420 Austin Bluffs Parkway  
Colorado Springs, CO 80933-7150  
Admissions 1-800-990-8227  
www.uccs.edu

**University of Colorado at Denver**

P. O. Box 173364, Campus Box 167  
Denver, CO 80217-3364  
Admissions (303) 556-2704  
www.cudenver.edu

**University of Denver - Division I**

2197 South University Boulevard  
Denver, CO 80208-0320  
Admissions (303) 871-2036  
www.du.edu

**University of Northern Colorado - Division I**

Carter Hall, Room 3006  
Greeley, CO 80639  
Admissions 1-888-700-4862  
www.unco.edu (970) 351-2881

**Western State Colo. University - Division II**

600 North Adams - Gunnison, CO 81231  
Admissions 1-800-876-5309  
www.western.edu

**COLORADO COMMUNITY AND JUNIOR COLLEGES**

Aims Community College  
Arapahoe Community College  
Colorado Mountain College  
Community College of Aurora  
Community College of Denver  
Front Range Community College  
Red Rocks Community College  
Colorado Northwestern CC  
Northeastern JC  
Trinidad State JC  
Lamar CC  
Otero JC

Admissions, 1-800-301-5388  
Admissions, 303-797-4222  
Admissions, 1-800-621-8559  
Admissions, 303-360-4700  
Admissions, 303-556-2600  
Admissions, 303-404-5550  
Admissions, 303-914-6600  
Admissions, 1-800-562-1105  
Admissions, 1-800-626-4637  
Admissions, 1-800-621-8752  
Admissions, 1-800-968-6920  
Admissions, 1-719-384-6831

www.aims.edu  
www.arapahoe.edu  
www.coloradomtn.edu  
www.cca.cccoes.edu  
www.ccd.edu  
www.frontrange.org  
www.rccc.cccoes.edu  
www.cnc.cccoes.edu  
www.nejc.cc.co.us  
www.trinidadstate.edu  
www.ccoes.edu/ccoes/lamar/index.htm  
www.ojc.edu

## COLLEGES THAT REQUIRE SAT II SUBJECT TESTS FOR ADMISSION

Colleges and universities that require SAT IIs are primarily located on the east coast of the United States and in California. No school requires more than three. Some of the schools allow students to choose any two or three tests; others stipulate particular ones (usually a math, an English and one other appropriate test. Some schools may allow students to submit an ACT score instead of one or more SAT II scores (please check with your school of interest to determine if they require SAT II in addition to SAT I).

Amherst College  
Barnard College  
Boston College  
Boston University  
Brandeis College  
Brown University  
Bryn Mawr College  
University of California (all campuses)  
California Institute of Technology  
Carnegie Mellon University  
Catholic University of Colgate  
University  
Columbia University  
Connecticut College  
Cooper Union (engineering only)  
Cornell University  
Dartmouth College  
Deep Springs College  
Duke University  
Franklin & Marshall College  
Harvey Mudd College  
Harvard University  
Haverford College  
College of the Holy Cross  
Howard University (writing test only)

Johns Hopkins University  
Lehigh University  
Massachusetts Institute of Technology  
Middlebury College  
College of New Jersey (writing test only)  
Northwestern University (integrated science program and honors program in medical education)  
University of Pennsylvania  
Pomona College  
Princeton University  
Rice University  
Stanford University  
University of Richmond  
Swarthmore College  
Trinity College (CT) (writing test only)  
Union College  
Vassar College  
University of Virginia  
Virginia Tech  
Washington & Lee University  
Wellesley College  
Williams College  
Worcester Polytechnic Institute  
Yale University

## Colleges that Recommend SAT II For Admission

American University  
Babson College  
University of Carleton College  
Case Western Reserve University  
Davidson College  
Eckerd College  
Georgetown University  
University of Georgia  
Hamilton College  
Hood College  
University of Marlboro College  
Mary Washington College  
Mills College  
New York University  
University of North Carolina at Chapel Hill  
Northwestern University  
Oberlin College

Occidental College  
Ohio Wesleyan University  
Pitzer College  
Reed College  
University of Rochester  
Rollins College  
Skidmore College  
Smith College  
University of Southern California  
Southern Methodist University  
Stevens Institute of Technology  
Sweet Briar College  
University of Texas at Austin  
Wheaton College (IL)  
Whitman College  
College of William & Mary

## **Tips for College Visitations**

In order to facilitate the gathering of pertinent information from a college visit, the counselors and DSF Advisor at South are suggesting that you ask questions that are not answered in the catalog. This indicates to the admissions officer that you have done your homework and have some knowledge of that particular school. Don't risk embarrassment by asking obvious questions such as "How many students do you have on campus?" Ask questions that may not be addressed in the catalog.

### **Living Conditions**

1. What kinds of facilities are there? (coed dorms, apartments, special interest dorms such as all engineers, foreign language dorms, etc.)
2. Is it possible to live off campus?
3. Are there any rules governing hours?
4. Are there any special provisions for the handicapped? (if you or a family member are)

### **Campus and Social Atmosphere**

1. Liberal, innovative, conservative? The drug scene?
2. Where do student usually go on the weekends? To what cities? What activities?
3. What, if any, social pressures are there?
4. What percentages of students join fraternities and sororities?
5. What kind of activities (concerts, plays, speakers, etc.) does the college provide? Any additional cost?
6. What are the college's ethnic percentages?
7. If the college has a religious affiliation, what are the requirements concerning biblical course work, theology-related courses and convocation and/or chapel?

### **Unique or Unusual Facets**

1. Does the college have any unusual experimental programs?
2. Do you have any independent study programs or cooperative work programs?
3. Does the college have a Phi Beta Kappa Chapter?
4. Do students participate on college and/or campus boards—such as admissions, policy, etc.?

### **Miscellaneous**

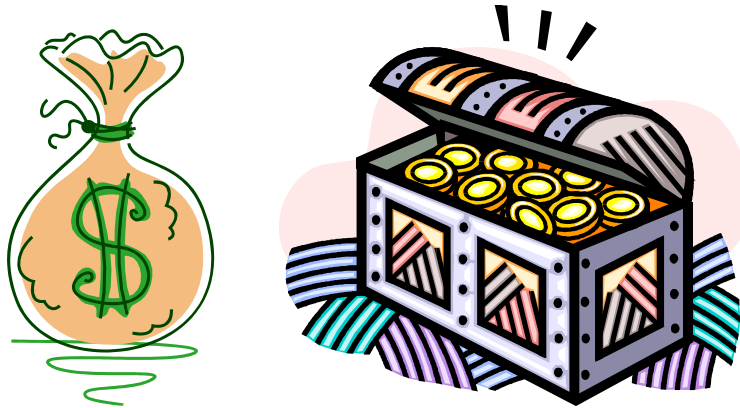
1. What percentage of students work? Is it recommended that freshmen work? Hours per week? Pay scale?
2. Do you have a "junior year abroad" program? How many students participate? What is the usual cost? Do you have to be fluent in a foreign language?
3. Is foreign language a requirement for admissions or in order to graduate from college?
4. Is physical education a requirement for graduation? How about science and math?
5. What is the usual course load for freshmen students?
6. Does the college offer any special scholarships other than need or merit? (Athletic, music, art, drama, journalism, ROTC, etc.)
7. What percentage of freshmen students graduate in four years?
8. What percentage of college graduates go on to graduate programs immediately after their bachelor's degrees?
9. How many students are enrolled from the Denver Metro area?



## HOW TO VISIT WITH A COLLEGE REPRESENTATIVE

SOUTH has an excellent academic reputation and is fortunate enough to have so many college representatives who schedule visits during the school year. Last year we had over 75 traveling representatives come to South to visit with students. We encourage students, especially juniors and seniors to sign up and attend these valuable meetings. The procedure for visits with college representatives are as follows.

1. The colleges visiting South will be posted on Naviance under college visits- [www.denversouth.org](http://www.denversouth.org) The page is updated each week!
2. Log onto your Naviance account frequently so you will stay current on the upcoming visits.
3. If you want to visit with a college representative, log onto your Naviance account and sign up under college visits. You must print the confirmation page or the reminder email that will be sent to you 24 hours prior to the visit to act as your pass out of class.



## FINANCIAL AID ASSISTANCE AT SOUTH

Visit the Future Center at South, room 114. Contact Meredith Barrow at [mbarrow@denverscholarship.org](mailto:mbarrow@denverscholarship.org) or 720-423-6268.

More than 90% of all financial aid granted to American students comes from the college or university they attend in the form of government and specific to that school grants and scholarships, work-study stipends, or loans. It is important to connect with a Financial Aid Officer at your college and work with him/her to identify all specific-school sources of money. You should realize that a superior academic record in high school is the prime key to receiving scholarships.

The Future Center has books and computer programs listing the more prominent scholarships and also a file of applications for many of them. Also, look for the link to Denver Scholarship Foundation scholarship list. Counselors and volunteers can help you connect to possible matches.

[www.denverscholarship.org/scholarshipdirectory](http://www.denverscholarship.org/scholarshipdirectory)

# Admission Essay Cheat Sheet

Just Starting?	Already finished?
<b>Brainstorm sentences or words for these questions...</b> <hr/> <ul style="list-style-type: none"> <li><input type="checkbox"/> I dream about...</li> <li><input type="checkbox"/> I think about...</li> <li><input type="checkbox"/> I'm afraid of...</li> <li><input type="checkbox"/> I'm interested in...</li> <li><input type="checkbox"/> On the weekends I like to...</li> <li><input type="checkbox"/> I'm good at...</li> <li><input type="checkbox"/> I'm not good at...</li> <li><input type="checkbox"/> I'm glad when...</li> <li><input type="checkbox"/> I'm sad when...</li> <li><input type="checkbox"/> I don't believe...</li> <li><input type="checkbox"/> I have difficulty with...</li> <li><input type="checkbox"/> I laugh when...</li> <li><input type="checkbox"/> I get angry when...</li> <li><input type="checkbox"/> I love it when...</li> </ul>	<b>Does your Essay..</b> <hr/> <ul style="list-style-type: none"> <li><input type="checkbox"/> Tell a story?</li> <li><input type="checkbox"/> Highlight <b>one</b> aspect of your personality that isn't already reflected in your application? If you try to cover too many, it sounds like a resume.</li> <li><input type="checkbox"/> Have a clear main idea?</li> <li><input type="checkbox"/> Include specific details and examples to help develop your main idea? (hint: use the five senses to describe something).</li> <li><input type="checkbox"/> Sound like yourself? Avoid using general statements like, "I am passionate about helping people." Let your personality show!</li> <li><input type="checkbox"/> Sound good when you read it out loud? Mistakes become more clear when you read aloud.</li> </ul>

## Common Themes of Successful Essays:

### Tells a story using specific details

- "Maurizio brought me to a dangerously steep staircase that looked like it had been purposely drenched in oil to increase the chance of a fall. As he gracefully flew down each step, I clutched onto the rusty tile walls, strategically putting one foot first and then the other."

### Connects the story to a bigger theme and has a "take away"

- "It was in that lunchroom when I was 17, when I realized that I can choose how to remember something. I can choose to find meaning in that day, not in the horror but in other people's kindness."

### Demonstrates ability to reflect on and learn from experiences

- "Moments such as those challenge my criteria of what constitutes true success. My mother, despite never going to college, still managed to make a difference in my life. Tomorrow, she will put on her uniform with just as much dignity as a businesswoman would her power suit. What is her secret? She wholeheartedly believes that her son's future is worth the investment. The outcome of my education will be vindication of that belief."

### Voice and personality

- “Today is the day when Isaac (that’s me) starts his job of putting smiles on grim faces as the reader of the morning announcements. “But Isaac, that job is super boring! You just read what’s written on a piece of paper,” is what an uninformed person might say...”

**Curiosity and/or passion for learning**

- “To me, the Italian language holds an essential connection to my past, but also a constant goal for the future. It is likely that I will never fully master the vernacular and colloquialisms, yet learning this language will stimulate me intellectually and culturally for life.”

**Demonstrates how you will make a positive impact on a community**

- “I watch the [morning] announcements evolve from an unfortunate but necessary part of the day to a positive and inspiring event. It is now more than just a monotonous script; it becomes a time to make sure that everyone has at least one thing to smile about.”



## THE PERSONAL INTERVIEW

When you receive your application materials from the colleges of your choice, you will discover that some colleges require an interview, others strongly recommended it and still others leave the matter to you. In all cases, it might be a good idea to take the plunge! Though your SAT/ACT scores, high school grades, and letters of recommendation are more important, in instances where the decision hangs in the balance, a good interview can sometimes push an applicant over into the "admit" category. *(In some offices, the interview report is the last item in a candidate's dossier, the last thing the admissions officer reads before a final judgment.)*

It is often possible to arrange the interview with a college alumnus/alumna who lives in your locality. There are pluses and minuses to this alternative. An "alum" is likely to be knowledgeable about your home area, and may have heard of your accomplishments. On the other hand, some have exceedingly fond memories of their colleges as they existed in another era, and may be unhappy if they detect signs that you will carry a changing culture to their campus. The greatest argument against these interviews is that it may keep you from visiting the campus, a trip with many benefits!

Prepare for the interview by reading the material the college sent you. Dress neatly, but not so out of character that you feel awkward. Bring along proof of achievements, such as slides, articles you wrote for the school newspaper, a proposal for the science fair--they can help to break the ice and let the conversation flow smoothly.

The interview has two purposes for you to get to know the college and for the college to learn about you--and sometimes the two purposes are achieved simultaneously. When you ask a question, its form can reveal things about you. Do not, for example, ask questions such as "How large is the freshman class?" or "Does the college offer Chinese?" Since the answers are available with a glance at the catalogue, the implication is that you were too uninterested to discover the facts for yourself.

Remember that the interview is a dialog, not a variant of "Twenty Questions". The answers that you give are less likely to be judged as simply right or wrong than as preludes to intelligent conversation. If your response to a question about your hobbies is that you like to read, that will not conclude that line of inquiry. Be prepared to mention titles and authors and to say something about a book's content-- otherwise find another hobby to talk about!

A week or so after the interview, it would be a nice gesture to send a thank you note to your interviewer. If for some reason the interview went badly, it would not be amiss to write a note to the admissions office explaining your view of what happened. In this, as in other aspects of the interview process, the college wants to know who you are, not to subject you to a test that you pass or fail.



Dear Senior Class,

**\*\*Here are the steps you need to take for all college applications\*\***

- ✓ Develop a list of schools to which you are going to apply.
- ✓ Update that list and keep it accurate in Naviance.
- ✓ Complete the FERPA waiver under the "colleges I'm applying to" list in Naviance so that I am legally able to send out your transcript to colleges.
- ✓ Go to each college's admissions website and find an application check list (usually linked somewhere under "application" or "apply" on the admissions website). This checklist will tell you what is needed for a complete application. *Every school is different!!!*
- ✓ Complete and submit your part of the application

**Fill out Transcript Request form TWO WEEKS BEFORE YOUR APPLICATION DEADLINE (see chart below) Forms are with Mrs. Ayala, the Counseling Secretary.**

- ✓ Test scores from us will be UNOFFICIAL. If on your checklist it says you need OFFICIAL scores, you must send them from ACT/SAT ([www.actstudent.org](http://www.actstudent.org))
- ✓ When you are working with a paper application, students must provide a pre- addressed manila envelope with 3 stamps to their counselor.
- ✓ Email your teacher recommenders to ensure they know when and how to submit your letters of recommendation. **Remember to request letters through Naviance!**
- ✓ Check with your counselor regarding a personal interview that may be necessary before processing your applications and/or writing your letter of recommendation.
- ✓ Email or call the college once you believe all materials have been submitted to ensure everything for a complete application was received.
- ✓ Handwrite a thank you note to your teacher recommenders.

*As always, if you have questions please visit your counselor or DSF College Advisor!*

**Below are the dates in which your transcript request form must be completed by in order to be sent out on time by the appropriate deadline.**

**See/Email your counselor/DSF advisor BEFORE...**

November 1  
November 17  
December 1  
December 5  
December 5  
January 18  
February 1

**...for applications due on...**

November 15  
December 1  
December 15  
January 1  
January 15  
February 1  
February 15

## **WEBSITES FOR POST HIGH SCHOOL EDUCATION**

*Since much of the college search and application process can now be done online, listed below are some valuable websites.*

### **American Universities**

<http://www.clas.efl.edu/CLAS/american-universities.html>

### **Peterson's Guide**

<http://www.petersons.com>

### **American School Counselors Association**

[www.schoolcounselor.org](http://www.schoolcounselor.org)

### **Colorado Council on High School/College Relations**

[www.coloradocouncil.org](http://www.coloradocouncil.org)

### **WICHE**

[www.wiche.edu](http://www.wiche.edu)

### **U.S. Community Colleges by State**

[www.utexas.edu](http://www.utexas.edu)

### **Virtual College Tours**

[www.campustours.com](http://www.campustours.com)

### **Historically Black Colleges and Universities**

<http://ericweb.tc.columbia.edu/hbcu/index.html>

### **International Schools**

<http://web66.coled.umn.edu/schools.html>

### **Common Application**

[www.commonapp.org](http://www.commonapp.org)

### **Naviance: denversouth.org link on left**

Username: SID password: MMDDYY

### **US Department of Education**

<http://nces.ed.gov/ipeds/cool/search.asp>

### **Kaplan**

[www.kaplan.com](http://www.kaplan.com)

[www.coloradomento.edu](http://www.coloradomento.edu)

### **Multiple Use Web Sites**

[www.collegeedge.com](http://www.collegeedge.com)

[www.coloradomenter.org](http://www.coloradomenter.org)

[www.xap.com](http://www.xap.com)

[www.ed.gov/pubs/prepare](http://www.ed.gov/pubs/prepare)

[www.gocollege.com](http://www.gocollege.com)

[www.collegenet.com](http://www.collegenet.com)

[www.allaboutcollege.com](http://www.allaboutcollege.com)

[www.collegelink.com](http://www.collegelink.com)

[www.keycolleges.com](http://www.keycolleges.com)

## **FINANCIAL AID**

Financial Aid Sources

[www.fastweb.com](http://www.fastweb.com)

US Department of Education

[www.ed.gov](http://www.ed.gov)

[easi.ed.gov](http://easi.ed.gov)

Financial Aid Information page

<http://www.finaid.org>

FAFSA- Online

[www.fafsa.ed.gov](http://www.fafsa.ed.gov)

Financial Aid Sources

[www.gocollege.com](http://www.gocollege.com)

[www.winscholarships.com](http://www.winscholarships.com)

Scholarship Resource Network

[www.srnexpress.com](http://www.srnexpress.com)

Student Loans

[www.sallie.mae.com](http://www.sallie.mae.com)

WiredScholar

[www.wiredscholar.com](http://www.wiredscholar.com)

Other Financial Aid Information

[www.fastaid.com](http://www.fastaid.com)

[www.collegeispossible.org](http://www.collegeispossible.org)

[www.nacac.com](http://www.nacac.com)

Denver Scholarship Foundation

[www.denverscholarship.org](http://www.denverscholarship.org)

## **TEST PREPERATION**

Kaplan

[www.kaptest.com](http://www.kaptest.com)

College Board (SAT)

[www.collegeboard.com](http://www.collegeboard.com)

ACT

[www.act.org](http://www.act.org)

Naviance

Go to [denversouth.org](http://denversouth.org)

Link on the left

Select Test Preperation

ACT/SAT [www.collegeincolorado.org](http://www.collegeincolorado.org)

## **CAREER RESOURCES**

Careers, Colleges, Scholarships

[www.careersandcolleges.com](http://www.careersandcolleges.com)

Occupational Handbook

<http://stats.bls.gov/ocohome.htm>

Focus on Your Future

[www.focusonyourfuture.net](http://www.focusonyourfuture.net)

Other Career Resources

[www.monster.com](http://www.monster.com)

[www.careerkey.org/english](http://www.careerkey.org/english)

## **RANKING COLLEGE**

Money Magazine's College Guide

<http://www.pathfinder.com/money>

U.S. News & World Report

[www.usnews.com/usnews/edu/home.htm](http://www.usnews.com/usnews/edu/home.htm)

## **ATHLETICS**

[www.ncaa.org](http://www.ncaa.org)

[www.eligibilitycenter.org](http://www.eligibilitycenter.org)

## FINANCIAL AID

Key steps in accessing financial aid...See DSF College Advisor: 720-423-6268 (Room 114)

1. Determine whether you might qualify for need based aid. In other words, your family can not meet the total cost of attending a particular school.
2. Submit the FAFSA and/or CSS Profile, or both, online at our FAFSA Night held in October. This must be completed before MARCH 1<sup>st</sup> for total access to any need or merit based aid. The FAFSA becomes available October 1<sup>st</sup> of your senior year and calculates your families **expected family contribution (EFC)**. This is the amount of money around which any school you attend must build your financial aid package around.
3. Upon acceptance, contact a financial aid officer at the school to determine the best “package” they can provide for you.
4. Please see your DSF advisor or counselor to help determine which outside scholarships you may be eligible for to help cover the cost of any unmet need.
5. Obtain scholarship applications as early as possible and continually look at scholarship websites as they come available. Scholarships are an ongoing process.
6. Take advantage of your strong academic record and DO NOT FORGET about institutional scholarship programs! Those are generally due around March 1<sup>st</sup>!
7. Do not be discouraged if you fail to get large amounts of money directly out of high school, especially if your high school record is not as strong as you had hoped. If you demonstrate that you are a quality student as a freshman in college, you will open up more scholarship opportunities as a sophomore.
8. Check into ROTC scholarships that might pay your college expenses if you want to join the armed forces after graduation.
9. Get advice on student loans so that you get the best rates and best value on any borrowed money.
10. Do not be afraid to ask for HELP during this process. Financial aid is different for every individual.

*See the above page for websites pertaining to financial aid services!*



## TEST PREPERATION PROGRAMS

These are several test preparation programs for the SAT and ACT available in the Metro Denver area. Test preparation booklets for the SAT and ACT are available in the Future Center. South High School also has access to ACT/SAT tutors through the University of Denver during school hours. If you are interested in a tutor, see the DSF college advisor in room 114.

Denver Public Schools does not endorse the test preparation programs listed below. It is important to know that research shows that there is no substantial change in test scores from the effects of such test prep programs. However, since the Future Center and Counseling Center received numerous requests for information, we are providing the following list of test preparation services.

**ACADEMIC RESOURCES CORP.**

Suite 339, Writers Center One  
1777 South Bellaire Street  
Denver, CO 80222 (303-759-8371)

Call for an appointment  
Private sessions available, \$50/session

**ARAPAHOE COMMUNITY COLLEGE**

5900 South Santa Fe Drive  
Littleton, CO 80120 (303-797-5723)

Study Skills, How to Master Test Taking  
Spring ACT/SAT classes; SAT/ACT workshop  
COST: \$45 - \$65

**COLLEGE DIRECTION, INC.**

1720 South Bellaire Street, Suite 100  
Denver, Colorado 80222 (303-692-1918)

Review sessions, 3 1/2 hours, \$75  
Individual tutoring for ACT or SAT, \$37/hour  
(Partial scholarships available)

**COLLEGE INSIGHTS**

1722 14th Street, Suite 210  
Boulder, CO 80302 (303-541-0821)

Call for information

**KAPLAN**

720 South Colorado Boulevard, Suite 140A  
Denver, CO (1-800-527-8378)

Call for dates  
COST: ACT - \$699  
COST: SAT - \$899

**LEARNING EDGE**

10143 West Chatfield Avenue  
Littleton, CO 80127 (303-973-9946)

2 hours/week, 9 weeks-- \$28/hour for customized instruction  
Group and individualized sessions available  
COST: discount for groups of 3 or more

**LEARNING EDGE (Second location)**

7200 East Dry Creek  
Englewood, CO 80111 (303-770-0029)

Group and individualized sessions available

**PREP ASSOCIATES, INC. 709**

West Littleton Boulevard  
Littleton, CO (303-424-8072)  
(Second Location) I-70 and Kipling

ACT/SAT 7-week courses(Individual tutoring available, \$40/hour)  
Workshops available; alternate locations  
COST: 10 hours: \$165 (SAT & ACT)  
8 hours: \$135 (SAT & ACT)

**PRINCETON REVIEW**

Ryan Krug (Stanford Educated)

Call for dates -- 30 hrs. of instruction, software and all materials

303 817 0406

## 2015 AP EXAM DATES

### Week 1

Test Date	Morning (8 AM)	Afternoon (12 PM)
<b>Monday</b> <b>May 4</b>	AP Chemistry AP Environmental Science	AP Psychology
<b>Tuesday</b> <b>May 5</b>	AP Calculus AB AP Calculus BC	AP Seminar AP Chinese Language and Culture
<b>Wednesday</b> <b>May 6</b>	AP English Literature and Composition	AP Japanese Language and Culture AP Physics 1: Algebra-Based
<b>Thursday</b> <b>May 7</b>	AP Computer Science A AP Spanish Language and Culture	AP Art History AP Physics 2: Algebra-Based
<b>Friday</b> <b>May 8</b>	AP German Language and Culture AP United States History	

### Week 2

Test Date	Morning (8 AM)	Afternoon (12 PM)
<b>Monday</b> <b>May 11</b>	AP Biology AP Music Theory	AP Physics C: Mechanics <b>IMPORTANT ALERT AFTERNOON (2 p.m.)</b> Special Exam time. <b>AP Physics C: Electricity and Magnetism</b> is the only exam given at 2 p.m.
<b>Tuesday</b> <b>May 12</b>	AP United States Government and Politics	AP French Language and Culture AP Spanish Literature and Culture
<b>Wednesday</b> <b>May 13</b>	AP English Language and Composition	AP Statistics
<b>Thursday</b> <b>May 14</b>	AP Comparative Government and Politics AP World History	AP Italian Language and Culture AP Macroeconomics
<b>Friday</b> <b>May 15</b>	AP Human Geography AP Microeconomics	AP Latin

## COMMON TERMS USED BEYOND HIGH SCHOOL

**Acceptance** -- Candidate is admitted. Colleges usually notify students in early April.

### **Admissions Program**

**Early Action** -- A plan allowing students to know the decision on their application before the standard April notification date. It differs from "early decision" in that students are not required to accept admission immediately.

**Early Decision** -- A plan in which students apply in November or December and learn of the decision on their application during December or January. This plan is suggested only for students who are academically strong and know where they want to attend. If accepted, early- decision students are required to withdraw their applications to other schools and agree to matriculate at the college accepting them.

**Early Notification** -- A program in which applicants must file their papers by December 1 in order to receive an admissions decision by February 1.

**Rolling Admissions**-- A program in which admissions applications are evaluated upon receipt and applicants are immediately notified of the decision.

**American College Testing Program (ACT)** -- an organization based in Iowa City, Iowa, that provides tests and other educational services for students, schools and colleges.

**Application** -- The document submitted by a student who wants to be admitted to a college.

**Apprentice Programs** -- System of learning a skilled trade while earning. It combines on-the-job training which is supervised by skilled craft workers with related supplemental instruction.

Programs vary in length from 1 to 5 years.

**Associate Degree** -- The degree given for finishing a two or three year program of college work. In some colleges, associate degrees are given for partial completion of work in a bachelor's degree program.

**Bachelor's Degree** -- The degree given for finishing a college program of at least four but not more than five years of academic work. Usually this degree is either a BA (Bachelor of Arts) or BS (Bachelor of Science).

**Certificate** -- An award for finishing a one or two year post-secondary school program. It usually certifies competency in a specific job field. Example: certified welder.

**College Board** -- A non-profit membership organization, headquartered in New York City, that provides tests and other educational services for students, schools and colleges (SAT).

**Common Application** -- An admission application that, when completed, can be sent to several institutions.

**Community College** -- A two-year college offering courses that fit the needs of the community. Occupational, adult, and general education courses are included along with liberal arts transfer courses. Though the terms junior and community colleges are often used interchangeably, junior colleges are more often limited to liberal arts transfer courses.

**Deferral** -- A term used by the college to handle early decision candidates who were not accepted in December but have a chance in regular admissions.

**Degree** -- A title given as official recognition for satisfactorily completing a curriculum.

**Diploma** -- A document that states a person has satisfactorily completed a curriculum.

**General Educational Development Testing Program (GED)** -- Upon successful completion of this 5 part test, a student may earn a Colorado High School Equivalency Certificate from the Colorado Department of Education. Nearly all employers, training programs and licensing boards accept this credential in the same manner they accept regular high school diplomas.

**Graduate School** -- The part of a university that offers programs for advanced degrees. (Master's, Doctor's)

**Liberal Arts College** -- A college in which the emphasis is on a program of liberal arts and basic sciences, usually leading to a bachelor's degree. Some pre-professional programs such as pre-law and pre-medicine may also be offered.

**Major** -- A student's main field of study.

**Open Admissions** -- The college admissions policy is virtually open to all applicants with high school diplomas or their equivalent.(GED)

**Proprietary (Trade) School** -- A for-profit institution that provides training in specific job related skills. Programs can provide either certification or an associate degree.

**Reply Date** -- The date that an accepted student must indicate desire to attend. (Usually May 1<sup>st</sup>.)

**Scholastic Assessment Test (SAT I and SAT II)** -- A two-and-one-half hour multiple-choice exam measuring verbal and mathematical reasoning abilities. Vocabulary, verbal reasoning and comprehension of reading material are tested in the English sections; Arithmetic, elementary algebra and geometry are covered in the math sections. The test is scored on a scale of 200 to 800. Check to see if the colleges/universities you are applying to require the SAT II--subject tests.

**Tax Supported Adult Vocational Education Programs (Emily Griffith Opportunity School)** -- Lower tuition vocational education to residents of a particular city, county or state.

**University** -- An institution of post-high school education that has these main aims (1) teaching graduate and undergraduate programs; (2) conducting research to find new knowledge and more ways to use old knowledge; (3) making its findings and teachings available to society. The university grants advanced degrees as well as bachelor's degrees in many fields including liberal arts, sciences and professions.

**Waiting List** -- A kind of limbo that leans closer to rejection than acceptance. If placed on such a list for a school that still appeals to you, let the school know of your interest. It may sway a decision when openings appear.



## POST HIGH SCHOOL OPTIONS TO CONSIDER IN ADDITION TO COLLEGE

It is important to know that well over half of the projected new jobs in the 21<sup>st</sup> Century will not require a college degree. Community colleges, Emily Griffith Technical College, trade schools, the armed forces and apprenticeship programs are all valuable options to extend your education and, thereby, your prospects for better-than-entry-level employment. Also remember that nationally only 1 in 5 persons even have a baccalaureate degree or higher.

### Armed Services

The armed services offer positions to hundreds of thousands of high school seniors each year. In addition to having an opportunity to serve their country, members of the armed services receive many benefits:

1. Free technical training in over 200 different skill areas
2. Thirty days of vacation with pay
3. Excellent educational opportunities
4. Medical and dental care at no charge
5. Housing and meals
6. Guaranteed deferred entry at colleges to which you have been accepted.

Entrance requirements for the various branches have toughened significantly in the past few years. A high school diploma is usually required for any branch.

1. Be at least 17 years old
2. Be physically qualified
3. Be of good moral character
4. Qualify for the Armed Services Vocational Aptitude Battery (ASVAB)
5. Have a high school diploma

### ROTC

The Reserve Officers Training Corps (ROTC) is a special opportunity for high school graduates to qualify for commissions in the armed forces. Students selected are awarded scholarships through a highly competitive national selection process and receive tuition and other financial benefits that can be worth as much as \$75,000 at many of the country's leading colleges and universities. There is a minimum duty obligation for students who receive a commission through these programs.

#### *Deadlines:*

Applicant Questionnaire  
SAT I or ACT scores

December 1<sup>st</sup> annually  
October for ACT, November for SAT I

Interested seniors should contact recruiters at the following numbers:

Air Force	303-364-3095	National Guard (Air)	303-677-9449
Army	720-904-2174	National Guard (Army)	303-677-8517
Coast Guard	303-252-0919	Navy	303-361-0696
Marine Corps	303-456-5043		

### SELECTING A TECHNICAL OR TRADE SCHOOL (INCLUDING EMILY GRIFFITH TECHNICAL COLLEGE)

The U.S. Bureau of Labor Statistics predicts three-quarters of the new jobs created will be in services such as communication, trade, and transportation. Some occupations, which will experience the largest growth, are truck drivers, nursing aides, automotive mechanics, carpenters, electronic technicians, maintenance personnel, and electricians. The need for skilled workers trained in these and other trade and technical fields should remain high into the turn of the century.

The selection of a trade school is just as important as the selection of a college. The thousands of dollars and hours you spend to receive training should be seen as an investment. Therefore, seek as much information as possible before making a decision.

The first step in choosing a trade or technical school is to visit the Future Center and Counseling Center to see which schools offer training in your fields of interest. If catalogs are not available, write directly to the trade or technical school.

Questions you should ask about the institution include:

1. Is the school licensed by the state's post-secondary school licensing agency?
2. Is the school accredited? Accreditation represents a standard of quality that has been determined by a neutral agency.
3. Are the courses offered up-to-date, well rounded, and of high quality? Will they prepare you for your field? How long will training take?
4. Do the teachers have professional experience in the field?
5. What type of facilities and equipment does the school offer? Is the equipment current with what is being used in the field?
6. Does the school have a laboratory or shop to duplicate a real work environment?
7. Does the school offer regular job placement assistance? Does it help graduates find jobs? At what types of jobs are graduates placed?
8. What is the total cost of tuition, supplies, and fees? Can you realistically afford the program?
9. What kinds of financial aid are available through the school to meet your financial need? Pell grants? Stafford Loans? Scholarships?

Finally, visit the school when classes are in session. Talk to students to see if they are happy with their training. Look around at the buildings and equipment to see if they compare with the catalog description. If possible, talk to graduates and find out what they think of the school.

### **APPRENTICESHIP PROGRAMS**

One of the most traditional, yet often overlooked, ways to receive training for a career is through apprenticeship programs. Basically, an apprentice is someone who agrees to work for an employer for a certain length of time at less than full wages in return for the opportunity to learn the trade. At the end of the training, the apprentice becomes a "journeyman."

There are over 200 apprenticeship training programs nationally. Trades ranging from aircraft mechanics to welder are apprenticeable. Colorado offers approximately 50 different programs. If you can so a job with your hands, there is probably a program. Unlike vocational training in a school setting, apprentices are actually hired by an employer and are paid decent wages while they learn. The length of most programs last between two and four years.

For information about apprenticeships, contact any of the following three sources:

Emily Griffith Technical College  
1250 Welton Street  
Denver, CO. 80204

720-423-4700

Colorado State Department of Community Colleges and Vocational Education

U.S. Department of Labor  
Bureau of Apprenticeships  
303-844-4794

# **DISTANCE LEARNING**

## **Education Online**

### **An Increasingly Popular Alternative To Standard Classroom Programs**

More and more, colleges and universities are offering certificate and degree programs of instruction over the internet. Whether for updating skills or getting you your first degree, this can be an opportunity to save the expense of travel, room and board, parking and other fees while earning a degree at a high quality school. Virtual classrooms allow students from almost any location on a flexible, personalized schedule. Competency based learning, customized to fit your needs, is the special advantage.

Virtual students need to be highly motivated, disciplined achievers. Optimally, distance learners have a tool to spend lots more time communicating with classmates and instructors than in standard classrooms, which can add depth of understanding. Genuine, face-to-face human interaction is the sacrifice.

Students must qualify for admission just as they would for standard programs. Tuition rates and textbooks are usually the same as with on campus classes but money is saved on other expenses. Having access to a computer with a high speed modem and occasional trips to a testing center or attending a campus based seminar are the main requirements. Excellent reading, writing and keyboarding skills are essential. Numerous majors and hundreds of individual classes are available. Standard financial aid applies.

Check out the websites below for information and accredited programs:

<http://www.elearn.byu.edu>  
<http://distancelearn.about.com>  
<http://cee.umn.edu/disted/AL/delinks.html>  
<http://www.hoyle.com/distance.htm>  
<http://members.tripod.com/~lepine/>  
<http://www.bfranklin.edu/de.html>  
<http://ccism.pc.athabasca.ca>  
<http://www.col.org>  
<http://www.detec.org>  
<http://www.usdla.org>  
<http://www.education-world.com>

Some questions to be answered before enrolling...

Is it an accredited program? How many students are enrolled and how many graduate each year? What is the job placement rate for graduates? What are the credentials of the faculty? What is the student-to-instructor ratio? How will I communicate with the instructor and other students for group study during the course? Do credits you earn transfer to other schools? What student services such as tutoring, financial aid, libraries and job placement are offered? What are my time limits? What does each credit cost and what other costs will be incurred? Other??



**JOB CORPS**  
**924 W. Colfax Ave. Suite C104**  
**Denver, CO. 80204**  
**303-623-0420**

The Job Corps is a government sponsored residential training program for young men and women ages 16-21. Vocational, academic and social skills are developed over a two-year commitment. Students from families of low income can qualify. Transportation, housing, clothing, meals, medical and dental care, recreation and a small monthly stipend are included. G.E.D., high school diploma and vocational and junior college classes are offered.



**AMERICORPS**  
**National Civilian Community Corps**  
**1201 New York Ave. N.W.**  
**9<sup>th</sup> Floor**  
**Washington, D.C. 20505**  
**1-800-942-2677**  
**[www.americorps.org](http://www.americorps.org)**

AmeriCorps \*NCCC is a four focus area service program for young adults ages 18-24, who are willing to commit to 10 months of work. Service involves the areas of environment, education, public safety and unmet human needs. Corps members receive lodging and skills training while in the program. Meals, housing, uniforms, limited health care and a modest living allowance (\$9,300) are provided. Upon completion of the program, participants receive a \$4,725 educational award that can be applied for future tuition costs or repayment of student loans.

CCHE Admission Eligibility Index, Effective Fall 2013

	SAT																				
		400	420	440	460	480	500	520	540	560	580	600	620	640	660	680	700	720	740	760	780
	ACT	<12	12	13	14	15	16	17	18	19	20	21	22	23	24	25	26	27	28	29	30
% H.S. Rank	H.S. GPA																				
0-1	0-1.3	46	47	49	51	53	55	57	59	61	63	65	67	69	71	73	75	77	79	81	83
2-3	1.4-1.5	49	51	53	55	57	59	61	63	65	67	69	71	73	75	77	79	81	83	85	87
4	1.6	51	53	55	57	59	61	63	65	67	69	71	73	75	77	79	81	83	85	87	89
5-6	1.7	52	54	56	58	60	62	64	66	68	70	72	74	76	78	80	82	84	86	88	90
7-8	1.8	54	56	58	60	62	64	66	68	70	72	74	76	78	80	82	84	86	88	90	92
9-10	1.9	56	58	60	62	64	66	68	70	72	74	76	78	80	82	84	86	88	90	92	94
11-12	2.0	58	60	62	64	66	68	70	72	74	76	78	80	82	84	86	88	90	92	94	96
13-15	2.1	60	62	64	66	68	70	72	74	76	78	80	82	84	86	88	90	92	94	96	98
16-18	2.2	61	63	65	67	69	71	73	75	77	79	81	83	85	87	89	91	93	95	97	99
19-22	2.3	63	65	67	69	71	73	75	77	79	81	83	85	87	89	91	93	95	97	99	101
23-26	2.4	65	67	69	71	73	75	77	79	81	83	85	87	89	91	93	95	97	99	101	103
27-30	2.5	67	69	71	73	75	77	79	81	83	85	87	89	91	93	95	97	99	101	103	105
31-34	2.6	69	71	73	75	77	79	81	83	85	87	89	91	93	95	97	99	101	103	105	107
35-38	2.7	70	72	74	76	78	80	82	84	86	88	90	92	94	96	98	100	102	104	106	108
39-43	2.8	72	74	76	78	80	82	84	86	88	90	92	94	96	98	100	102	104	106	108	110
44-48	2.9	74	76	78	80	82	84	86	88	90	92	94	96	98	100	102	104	106	108	110	112
49-53	3.0	76	78	80	82	84	86	88	90	92	94	96	98	100	102	104	106	108	110	112	114
54-58	3.1	78	80	82	84	86	88	90	92	94	96	98	100	102	104	106	108	110	112	114	116
59-62	3.2	79	81	83	85	87	89	91	93	95	97	99	101	103	105	107	109	111	113	115	117
63-67	3.3	81	83	85	87	89	91	93	95	97	99	101	103	105	107	109	111	113	115	117	119
68-72	3.4	83	85	87	89	91	93	95	97	99	101	103	105	107	109	111	113	115	117	119	121
73-76	3.5	85	87	89	91	93	95	97	99	101	103	105	107	109	111	113	115	117	119	121	123
77-81	3.6	87	89	91	93	95	97	99	101	103	105	107	109	111	113	115	117	119	121	123	125
82-86	3.7	88	90	92	94	96	98	100	102	104	106	108	110	112	114	116	118	120	122	124	126
86-89	3.8	90	92	94	96	98	100	102	104	106	108	110	112	114	116	118	120	122	124	126	128
90-92	3.9	92	94	96	98	100	102	104	106	108	110	112	114	116	118	120	122	124	126	128	130
93-100	4.0	94	96	98	100	102	104	106	108	110	112	114	116	118	120	122	124	126	128	130	132

CCHE INDEX SCORE FOR FIRST-TIME FRESHMEN	
Institution	Fall 2013
Adams State University*	80
Colorado School of Mines	110
Colorado State University	101
Colorado State University – Pueblo	86
Fort Lewis College	92
Colorado Mesa University*	92
Metropolitan State University of Denver**	76
University of Colorado Boulder	103
University of Colorado Colorado Springs	92
University of Colorado Denver	93
University of Northern Colorado	94
Western State Colorado University	80

\*Applies to students admitted to four-year programs only;  
 \*\*Applies to admitted students 19 years of age and younger;

Higher Education Admission Requirements (HEAR)	
Subject Areas *	Units
English **	4
Math ***	4
Natural Science ****	3 (2 Units lab-based)
Social Studies	3 (1 U.S. or World History)
Foreign/World Language (In Same Language)	1
Academic Electives *****	2

\*CCHE, CDE, School Districts and its advisors are developing standards for acceptable demonstrations of proficiency to be accepted in lieu of course completion. For course guidelines, see paragraph 4.01 of the Admissions Standards Policy.

\*\*Two units of ESL English may count for HEAR requirements when combined with two units of successfully completed college preparatory English.

\*\*\*College preparatory ESL mathematics/science courses that include content and academic rigor/level comparable to other acceptable courses may satisfy HEAR requirements.

\*\*\*\*Acceptable Academic Electives include additional courses in English, mathematics, natural/physical sciences and social sciences, foreign languages, art, music, journalism, drama, computer science, honors, Advanced Placement, International Baccalaureate courses and appropriate CTE courses.